

# floorify®

PLANKS & TILES



**BEAUTIFUL AND EASY**

ENG | 2022-23



F093

---

## YOUR STYLE, YOUR FLOOR, YOUR HOME

---

**Just like you, we love beautiful interiors and floors that almost unnoticeably create that warm feeling of home. The moment when you pour a delicious drink, put on your favourite playlist and enjoy the good life with friends, family or children. That is living as it should be: pure, beautiful and carefree with a Floorify floor tailored to your home and your life.**

At home you highlight your personality. Whether you are playful, enthusiastic or serene: your interior reflects that. Which is precisely why we are proud to present our collection of Floorify floors. Because they are so versatile, can take more than a knock or two and combine the unique charm of wood, concrete or natural stone with unparalleled ease of use. This is the best of many worlds. We are convinced of that already, and now it's your turn. Discover it for yourself.

ff



# WHAT WE REPRESENT



## Beautiful

### 01 Natural beauty

Colours with character  
Natural, matte textures  
Ultimate plank variation  
Subtle grooves

### 02 Large in size

Complete collection  
XL planks and big tiles  
Eye-catching herringbone

### 03 A sleek finish

Skirting boards and profiles  
in the same colour  
Planks and tiles that click  
together seamlessly  
20x20m profile-free

## Easy

### 01 Strong

Stain resistant  
Shock resistant  
Stable, limited expansion  
Can be placed in direct sunlight  
Warranty up to 25 years

### 02 Waterproof

100% waterproof to the core  
Wet maintenance possible

### 03 Comfortable

Silent  
Soft and warm on the feet

### 04 Ideal for renovation

Thin  
Cut with a utility knife  
Click system: floating installation on  
the Floorify Comfort underlay  
On almost any surface, without  
preparation  
On underfloor heating and cooling

### 05 Sustainable

Long-term use  
100% safe  
Reusable and 100% recyclable





# NATURAL BEAUTY

RIGHT DOWN TO THE DETAILS

The natural look of wood, that is what makes your Floorify floor so unique. Authentic colours, the soft shine of an oiled floor, a subtle edge finish, natural plank variation and a natural, brushed structure that always feels warm. Each plank is finished to perfection. Because true beauty lies in the details.

## Colours with character

Whether you choose planks, herringbone or tiles, the **colours** of your Floorify floor are **authentic, warm and very natural**. Timelessly beautiful, yet in line with the latest interior trends. At Floorify, you can always choose a floor that suits your interior and reflects your character.

## Playful variation

Our biggest inspiration? Nature. There, you rarely find repetition or set patterns. Playfulness and variety abound. That is why Floorify floors have **many different planks**. And that provides a very natural look.



F100



F100

## You feel what you see

Our click floors do not need gloss to shine. What's more, it's the **matte finish** that provides a natural look. You can see the grain and the knots in the mild morning sun. And you can feel them, when you go to get that first cup of coffee of the day barefooted. A very **authentic look and feel**, that is the ultimate Floorify experience.

## Into the groove

**Subtle grooves** accentuate the size of the planks and thus contribute to the authentic wood look of your Floorify floor. And you don't have to worry about maintenance. The grooves are easy to clean. Even after spilling your glass of wine.



F100





F014



F301

# LARGE IN SIZE

## Versatile and complete

The grandeur of wide planks, the classic elegance of a herringbone floor, large tiles in a concrete look for a subtle industrial touch,... Floorify has no standard sizes. We create each product in a way that it fits perfectly into your interior. Floorify? It's a **complete collection** and wide in variety.

## Eye-catching herringbone

Love at first sight. Does that even exist with floors? Oh yes! The youngest member of the Floorify family is the **herringbone floor**. The floor radiates the atmosphere of chic mansions. Floorify made a playful and unique version of it. We also consciously opted for individual planks that you simply and quickly click into a beautiful herringbone floor. It gives your interior that little bit more allure.



## Bigger and more daring

Extra long, extra wide and a particularly natural effect. Meet the XL planks (no less than 2 m long!) and big Floorify tiles that measure 60 x 90 cm. **Unusually large sizes** for a maximum experience of each room. Their exceptional dimensions ensure that every room looks more spacious. Think big! In that, we're really unique.

F100





# A SLEEK FINISH

## For a sleek look

With most click floors, you have to install transition profiles at regular intervals, certainly when transitioning between different rooms. This is not necessary with Floorify: our floors are extremely stable and retain their shape. This allows you to install up to 20x20 m profile-free.

Do you want to combine several floors in one space completely seamlessly? You can! Floorify planks and tiles can be clicked together without profile, resulting in a lengthwise seamless connection.

The end result is a **modern and sleek floor surface** that creates tranquillity and gives a wonderful feeling of space. This seamless look not only responds perfectly to current interior trends, but also saves time when installing. Aperitif, anyone?

## Well matched

The perfect match for your floor? **Skirting boards and profiles in the same colour and design.** So no more painting of skirting boards! Floorify has the right finish for every floor, in the same colour, and equally wear and water resistant. Did we mention that details really make the difference?





# THE STRONGEST AT HOME

Having fun is the essence of life. And that accidents happen sometimes, is something you will gladly put up with. This is exactly why our floors are **extremely shock and stain resistant**. With an **extra thick protective layer**, an innovative top layer with anti-stain technology and the unique Floorify Rigid Core for a **stable, strong and shockproof core**.

Why? Because life's a party. Because as a parent you don't want to have to worry about children playing, dirty feet or spilled orange juice. Want to let the sunshine in too? No problem! Our tiles and planks can be positioned in direct sunlight without having to worry.







# LIKE A FISH IN WATER

Floorify floors are **water resistant**. Not just a bit, completely. Let your living space, bathroom and bedroom seamlessly merge into one another: Floorify is at home everywhere.

The ease of use and versatility you get for free. Both for the water splashes from the shower and that spilled gin and tonic.



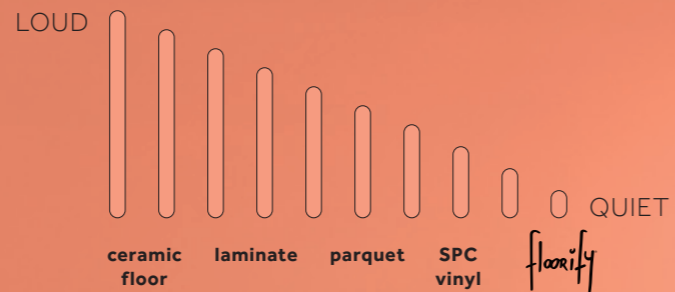
# SO COM-FORTABLE

IT MAKES YOU SPEECHLESS

Bring your home to life with people and music, and discover the ultimate in floor comfort. The smart combination of the **sound-absorbing Floorify floor** and Comfort underlay creates a wonderfully **soft floor surface** and an **acoustic layer**.

The result? A warm floor that always feels cosy and absorbs more than 21 decibels. This means you can enjoy the silence at any time, even when your teenage daughter is practising her latest dance moves.

## WALKING SOUND







# RENOVATION WITHOUT THE MESS

Floorify can be clicked onto almost any surface, without preparation. Yes, even over those ugly old tiles. **No demolition, no dust and no hassle.**

Floorify planks and tiles click together easily. You lay them floating (on the Floorify Comfort underlay) with no need for glue. Because the floors are so thin, you usually don't even need to trim your doors. You can simply cut your floor to size with a utility knife. **Cut, click and done!** Without anyone needing to be bothered by noise or dust.



# GRAND FLOORS, SMALL FOOTPRINT

## Safe

### Floorify contains no harmful substances.

#### A+ certification

A series of strict quality tests resulted in an A+ certificate in terms of indoor air quality.

#### Plasticizer-free core

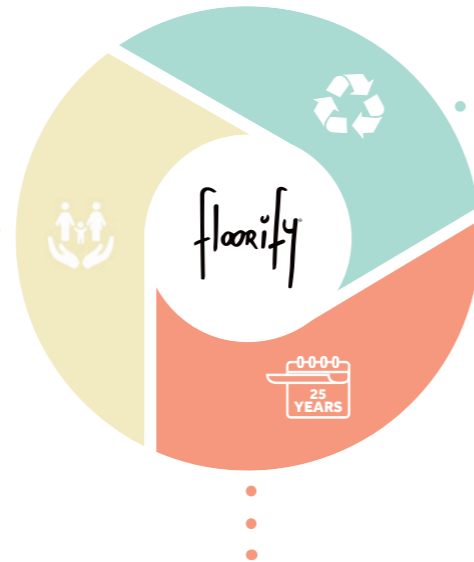
Plasticizers are chemical substances used in the production of flexible vinyl floors. Floorify floors have a rigid core, free of plasticizers.

#### REACH compliant

Floorify effortlessly complies with all European directives (REACH) regarding the use of hazardous substances.

#### TVOC < 10 µg

Floorify contains no glue or formaldehyde, and should not be glued either. So no worries about harmful VOCs. With "<10 µg", Floorify is 100x better than the European standard.



## The art of plastic

### It is super strong, keeps on going, is 100% waterproof and requires very little maintenance.

That's right. Plastic is a **fantastic material**. Provided that you use it **sustainably**. So not for disposable straws or plastic bags, but for **long-term uses**. Like... a floor that will keep on looking great for decades. Did you know that we offer a 25 year warranty on our floors? That's not something we "just do"! Another fact about plastic – we use PVC to produce our Floorify floors, which is the **most CO<sub>2</sub>-friendly plastic**. Many fewer fossil fuels are used in the production of PVC than for other plastics.

## Recyclable

We want Floorify to help make the world a better place. That's why we're helping to take care of it. Our rigid vinyl floors are entirely circular.

#### Reuse

Floorify is **installed floating**, without glue, so you can easily unclick the floor and take it when you move home. In much the same way that you give your furniture a second life, your floor will also work well in your next dream home.

#### Recycle

Floorify is 100% recyclable as it's a **homogeneous product** comprising just one material. The underfloor can also be recycled – separately. Every little bit helps, so all production residues are being recycled into new floors. And thus we complete the circle!

## We walk the talk

Producing sustainable products is only something that a truly sustainable business can do. And so, every day, we are getting greener and better. We think big, except when it comes to our ecological footprint. As a company, Floorify is more than ever **ready for the future**.

An electric car produces zero CO<sub>2</sub> emissions. That means our fleet is becoming more sustainable. **We drive 100% electrically**, full speed ahead.

Everything is better when the sun is shining, so our brand new BEN office has a **sunroof**. Self-generated energy, tangible in our products, and in your home.

At Floorify, we never stand still. Literally! We use the hashtag **#Floorifyforcharity** to encourage our employees to get involved in sport and exercise, during and after work. The benefits from our sporting activities all go to a good cause. Win-win!





# OUR STORY

**In 2016, an innovative product rocked the flooring world. A thoroughly Belgian brand that unites the best of both worlds: the warm appearance of natural materials with ultimate ease of use. Including extra shock, stain and water resistance. Enter: Floorify!**

"To reinvent the floor". The crazy dream of Floorify co-founders Marie Callens and Pieter Buyck. And that's exactly what they did. Marie explains, "We thought it was a shame that as a builder or renovator, you have to make the same choice over and over – either you opt for a floor that you really like but that is anything but practical, or you opt for something more user friendly while compromising on design. We didn't want to have to choose between attractive and easy. We wanted them both, in one fantastic product."

**THE MUM IN ME THINKS PRACTICALLY: MY FLOOR MUST WITHSTAND MY LITTLE TEARAWAYS. NOT FOR JUST A BIT, BUT FOR A LONG TIME.**



## The revolution of rigid vinyl

In 2016, Marie and Pieter – who were also once professional colleagues at a major international flooring company – decided to brave it and establish Floorify. The duo have only one mission – to conceive and design the perfect floor. Pieter explains, "In our previous roles, we developed a love for high-quality floors. But we knew one thing, that things can be better, more attractive, more sustainable and more straightforward. With Floorify, we wanted to pull out all the stops and to create a floor that was so innovative that it would turn the whole industry upside down." And that's what they did. By being the first in Europe to combine rigid vinyl planks and tiles, Floorify instantly established its name as a unique innovator.

The Floorify revolution has not escaped the notice of the rest of the world either. As the icing on the – admittedly already pretty good-looking – cake, Floorify has also received the Innovations at Domotex label in Hannover, thus making it a gold-medal winner at the "Olympic Games for Floors". Pieter explains, "With that we've not only seen a rapid expansion in our range and national and international customer base, but also managed to gather a great team of fellow floor enthusiasts around us (laughs). Our Floorify team is one with a slight twist, but cut from the right materials."

## For interior design lovers and parents

"We just can't help it," laughs Marie. "We just keep on coming up with new ideas." There were a great many Floorify innovations, one after the other. Marie explains, "Terrazzo, ceppo, herringbone or vintage bluestone – I'm a huge interior design fan and I'm crazy about all sorts of floors. I love nothing more than translating interior design trends into beautiful, low-maintenance and super strong Floorify floors. A floor that you can live on, dance on, spill things on and put muddy feet on. Floorify is a brand for interior design lovers and parents. Our floors need to be 100% 'kid-proof'. Not for just a bit, but for a long time."

## Take your floor with you

Marie's eye for design goes hand in hand with Pieter's technical knowledge. For example, Marie designed the innovative collection of XL planks, which are the longest on the market at two metres. The authentic character of wood is beautifully displayed in this exceptional format. When you ask Pieter about the density and tensile strength of Floorify, his smile appears spontaneously. "I get a buzz from materials and possibilities. Thanks to the unique rigid core and the innovative production process, with Floorify we solve all the traditional problems of click vinyl and laminate in one go. Now that's cool."

Floorify is silent, warm, waterproof and easy to lay on just about any surface. Even without preparation. Pieter explains, "It's a particularly renovation-friendly and durable floor – you can install Floorify floating, over your existing floor, so there's no demolition work. And since you don't have to glue Floorify to the underfloor, you can take your floor with you if you move, just like your furniture. How sustainable is that?"

## Happy to help

Of course, Floorifans deserve the best service. Marie explains, "With Floorify, we're aiming super high. We're totally committed to the 'wow' experience, and we hope that our customers really feel it." Floorify chooses its points of sale very carefully – you'll only find Floorify at locations where specialists can answer all of your questions. You can also see and feel the floors, and all of their details. If you'd rather view the collection at home, you can order free samples on the website. The website also has some handy installation videos and tips and tricks. Marie explains, "With our comprehensive online help centre, you can get an answer to your Floorify questions super quickly. We're just a click away, and always happy to help. You're always welcome to come and chat to us about floors!"



# BEFORE AND AFTER

FROM COLD TILES TO A COSY COCOON THANKS TO FLOORIFY



F023



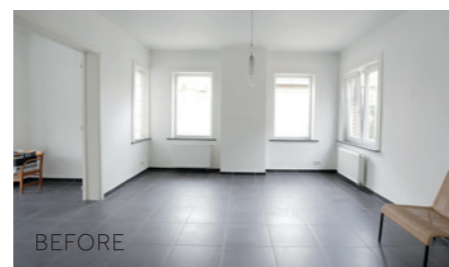
## Floorified!

**Who?** Simon (27), Sarah (24) and daughter Maud (18 months)

**What?** Renovation of a semi-detached property in Lovendegem, Belgium.

**Situation?** Sarah and Simon are moving from their apartment to a large house with a garden, where their daughter will have her own cosy room.

**New floor? Floorify!**  
Living room and bathroom: F100 Seychelles  
Dining room and hall: F023 Verona



### TIP

#### Floorify can be installed on top of the existing tile floor

No crushing, no dust, no hassle. Just install a new floor on top of the old one. Floorify planks and tiles just click together like laminate planks do. You install them floating (on the Floorify Comfort Underlay) and do not have to glue them. You simply cut them to size with a knife!

## Floorify advantages according to Simon & Sarah:

### 1 / It is the perfect floor for messy households

"In terms of maintenance, a parquet floor or natural stone floor simply does not suit us, as a family. In no time a plate of spaghetti sauce would end up on it. I know that I will never leave my high heels at the front door and our daughter would probably pour her cup of water over it every day. A parquet floor or natural stone floor is simply not suitable for the way we prefer to live: a bit messy, but carefree. Floorify is."

### 2 / The floor is water and mess-resistant

"We were able to install the Floorify floor without any problems in the dining room, but also in the entrance hall (wet, dirty feet: no problem), living room and bathroom. And under the high chair where our daughter deposits a daily impressionistic artwork made of beetroot purée, crumbs, water and soggy banana chunks. The floor was installed on our ground floor without profiles and thus creates a sense of space."

### 3 / Accidents are okay

"The top layer of Floorify floors has a hyper-protective film through which, in addition to water, no stubborn stains such as permanent marker or nail polish can pass through. Simply wipe with a piece of cloth and it's gone. We know that, because we have already tested it once by accident. In addition, you can also drop a heavy object on it, without leaving a dent. Which is also something we have already tested by accident."

### 4 / It looks real

"Nobody realises that it is not actually a real parquet floor. The wood look is very convincing."

### 5 / It's easy to clean

"With the vacuum cleaner. With the mop. With some water, a cloth and a pH-neutral floor cleaner."

### 6 / Vinyl is quiet

"No orchestra of trampling children's feet or tapping high heels: Floorify is comfortable to walk on."

### 7 / ... and warm

"Because it immediately assumes the ambient temperature, Floorify always feels warm under your feet (not uncomfortably cold, like tiles or laminate)."

F023 + F100



F023 + F100



F100





F318

---

**Do what  
you love,  
love what  
you do**



F032



F318







F029



F023

**If you  
can not do  
great things,  
do small  
things in a  
great way**



F031





F096



F001



F001

**Rain is just  
confetti  
from the sky**





---

**It's  
the season  
to sparkle**







F030

---

**Do more of  
what makes  
you happy**



F095



F028







F033

**Make today  
so awesome,  
yesterday  
gets jealous**



F034

# THE COLLECTION

**XL PLANKS**  
2000 x 240 mm

**LONG PLANKS**  
1524 x 225 mm

**PLANKS**  
1219 x 178 mm

**HERRINGBONE**  
750 x 125 mm

**BIG TILES**  
600 x 900 mm



# HERRINGBONE



F317

## A timeless eye catcher

Love at first sight. Does that exist with floors? Oh yes! The youngest member of the Floorify family is the herringbone floor. The floor radiates the atmosphere of chic mansions. Floorify made a **playful and unique version** of it. Floorify also consciously opted for **individual planks** that you simply and quickly click into a beautiful herringbone floor. It gives your interior that little bit more allure.



F300 HIRAME

F301 UNI

F317 UNAGI

F306 BURI

F317 UNAGI

F318 TORO

F319 ANAGO

plank dimensions | 750 x 125 x 4,5 mm  
 number of planks per box | 24  
 number of m<sup>2</sup> per box | 2,25  
 usage class | 33  
 wear layer | 0,55  
 installation | click - floating and  
 only in herringbone pattern  
 number of joints | V4  
 warranty for residential use | 25 years  
 warranty for commercial use | 5 years



# XL PLANKS



F100

## Big, bigger, biggest

Use every inch of your space and make your home bigger with the XL planks by Floorify. These planks are **longer and wider than any standards**, for maximum experience of the area. Lovely, that feeling of space!

The seemingly endless visual lines make rooms look bigger. This way, every room comes into its own even more. The **subtle grooves, lifelike brushed textures and natural planks variation** enhance the authentic look of your Floorify floor.





# LONG PLANKS

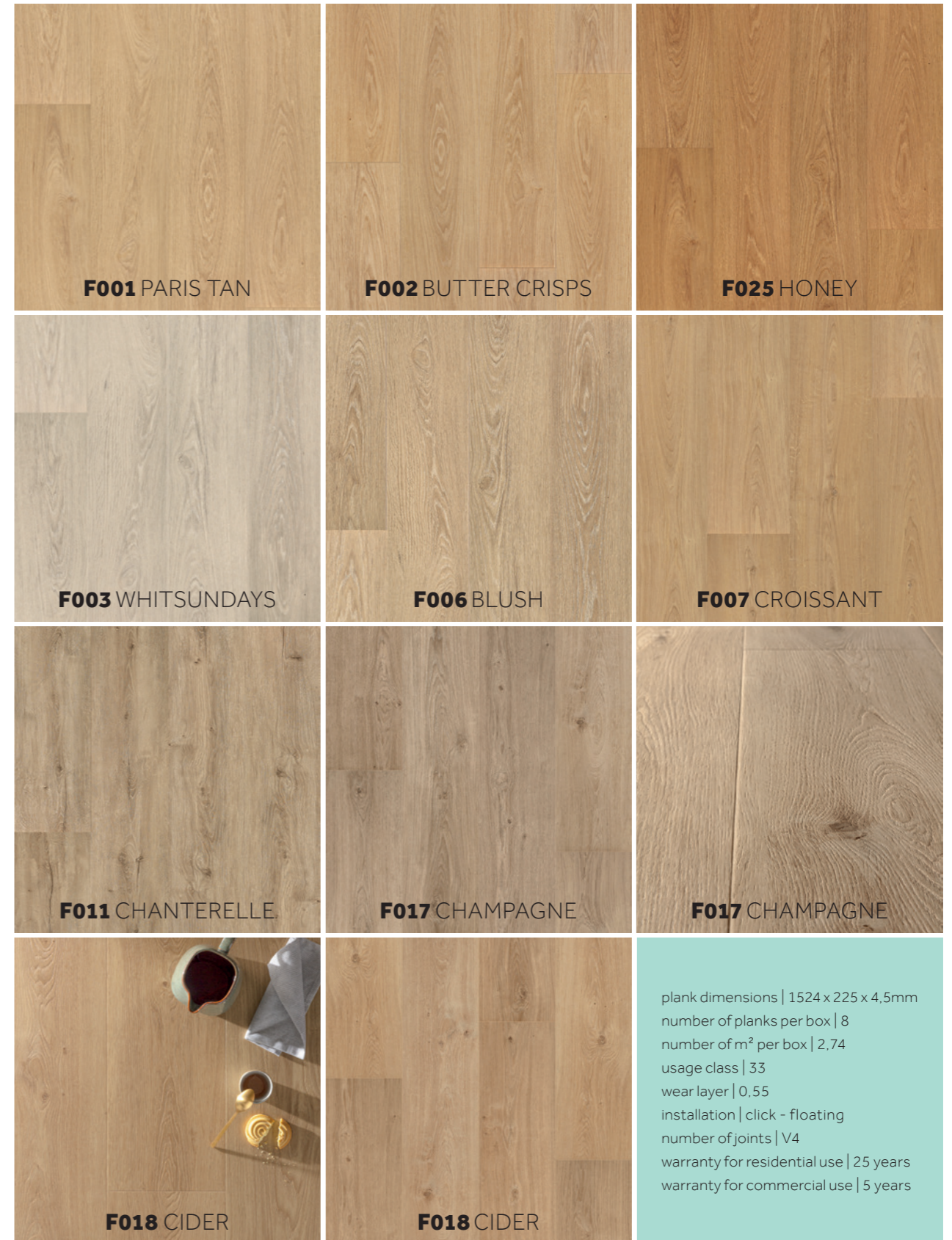


F019

## Pure down to the details

Floors inspired by **small details, sophisticated designs and fine wood structures** that perfectly match your lifestyle. Classic, rustic or rather progressive: you will discover a colour palette for your taste and style.

Each plank is the result of a quest for the **ultimate balance between character, colour, shine and finish**. A weathered look, a distinctive patina or rather Scandinavian streamline? Be inspired and make a choice that suits you.







NEW = available as of June 2022



F036



# BIG TILES



## For a sleek look

**60 by 90 cm.** The extra large size makes joints virtually invisible and installation extra quick and easy. The format also responds to the interior trend of the moment: seamless surfaces with a very natural effect. The tiles have the same appearance as concrete or natural stone without the disadvantages. For example, Floorify tiles are **stain resistant**, there is **no risk of cracking or tearing** and the floor is **easy to install** without extensive preparation. In addition, you do not have to take drying times into account: your Floorify floor is **immediately accessible!**





# PLANKS



F053

## The soft look of wood

The **subtle brushed texture**, the **matte look** and the **soft wood design** of these floors help to bring balance and calm to your interior. Whether you're looking for a rustic look, or something more modern, this collection is perfect for any interior style. The planks are also ideal for small rooms in which their **elegant size** has the opportunity to really stand out.



F050 CRÉMANT

F050 CRÉMANT

F051 COCONUT

F051 COCONUT

F055 APPLE CRUMBLE

F055 APPLE CRUMBLE

F053 STONEHENGE

plank dimensions | 1219 x 178 x 4 mm  
 number of planks per box | 12  
 number of m<sup>2</sup> per box | 2,60  
 usage class | 32  
 wear layer | 0,4  
 installation | click - floating  
 number of joints | V4  
 warranty for residential use | 20 years



# HOW TO INSTALL?

QUICK AND EASY!



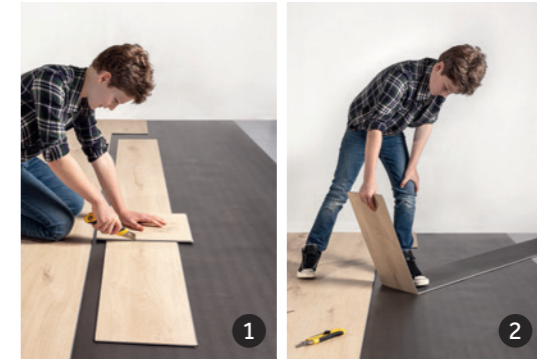
F100

## Click-and-go

You can lay your Floorify floor in 1-2-... no, you don't even need 3. Just roll out the underlay, click and go. Goodbye parquet glue, hello Floorify.

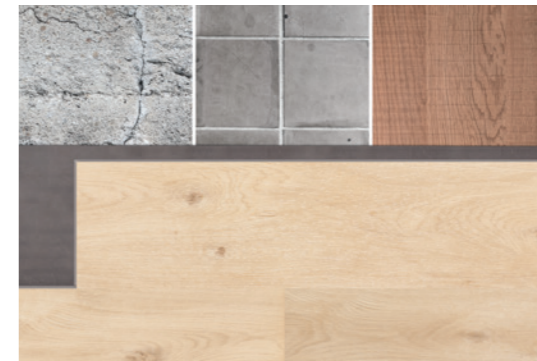
## Silent and dust-free installation

Ideal for installation in apartments or for a renovation of an existing home. Simply cut your Floorify floor with a utility knife. No-one is bothered by noise or dust.



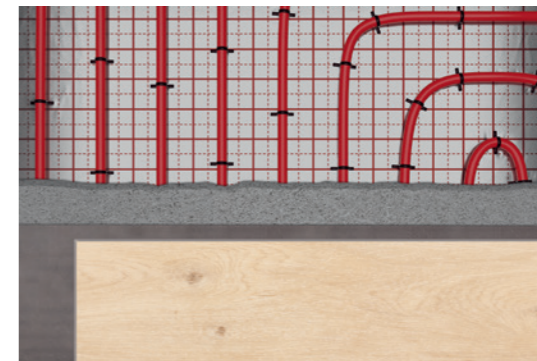
## On almost any surface, without preparation

An existing floor or small irregularities? Just install Floorify on top of it. Even those ugly old tiles can stay there.



## A perfect match for your underfloor heating

Floorify floors are thin. Very thin. That means they **conduct heat very well**. You can therefore combine them perfectly with underfloor heating or cooling. And as an extra plus: thanks to the minimal height you can easily keep your existing doors. If you are planning a renovation, that's a nice bonus.



Detailed installation instructions at [www.floorify.com](http://www.floorify.com)



# SMART ACCESSORIES

FOR A GRAND INTERIOR

patented technology



## Versatile skirtings

The perfect match for your perfect floor: skirtings that are as wear and waterproof as your Floorify floor. And with exactly the same finish and colour.



**Sxxx**  
MATCHING  
SKIRTING  
2000 x 61 x 10mm (lxhxd)

**Hxxx**  
MATCHING  
HIGH SKIRTING  
2000 x 89 x 10mm (lxhxd)

**Nxxx**  
MATCHING  
STRIP  
2000 x 3 x 18mm (lxhxd)

## Custom profiles

Enjoy a superior finish thanks to a complete range of custom profiles. Thanks to their minimalist and sleek design, they create an invisible transition between two separate floor sections. As intermediate, end and transition profiles. To us, it's only natural that they come in the same colour as your floor. Those details are there precisely to make the difference.



**Exxx**  
MATCHING  
END PROFILE  
2000 x 10 x 31,4mm (lxhxd)

**Oxxx**  
MATCHING  
TRANSITION PROFILE  
2000 x 7 x 36mm (lxhxd)

**Qxxx**  
MATCHING  
ADAPTOR PROFILE  
2000 x 10 x 42mm (lxhxd)

	Order code	Matching skirting	Matching high skirting	Matching strip	Matching end profile	Matching transition profile	Matching adaptor profile
<b>HERRINGBONE (750 x 125 x 4,5mm)</b>	<b>(Fxxx)</b>	<b>(Sxxx)</b>	<b>(Hxxx)</b>	<b>(Nxxx)</b>	<b>(Exxx)</b>	<b>(Oxxx)</b>	<b>(Qxxx)</b>
HIRAME	F300	S100	H100	N100	E100	O100	Q100
UNI	F301	S001	H001	N001	E001	O001	Q001
BURI	F306	S006	H006	N006	E006	O006	Q006
UNAGI	F317	S017	H017	N017	E017	O017	Q017
TORO	F318	S018	H018	N018	E018	O018	Q018
ANAGO	F319	S019	H019	N019	E019	O019	Q019

### **XL PLANKS (2000 x 240 x 4,5mm)**

PETIT BEURRE	<b>NEW</b>	F092	S092	H092	N092	E092	O092	Q092
PARMESAN	<b>NEW</b>	F093	S093	H093	N093	E093	O093	Q093
SKYFALL	<b>NEW</b>	F094	S094	H094	N094	E094	O094	Q094
FRANGIPANE	<b>NEW</b>	F095	S095	H095	N095	E095	O095	Q095
ILE DE RÉ		F096	S096	H096	N096	E096	O096	Q096
MATTERHORN		F097	S097	H097	N097	E097	O097	Q097
TOFFEE		F098	S098	H098	N098	E098	O098	Q098
CLOONEY		F099	S099	H099	N099	E099	O099	Q099
SEYCHELLES		F100	S100	H100	N100	E100	O100	Q100
SABAYON		F101	S101	H101	N101	E101	O101	Q101
TEDDY BEAR		F102	S102	H102	N102	E102	O102	Q102

### **LONG PLANKS (1524 x 225 x 4,5mm)**

PARIS TAN		F001	S001	H001	N001	E001	O001	Q001
BUTTER CRISPS		F002	S002	H002	N002	E002	O002	Q002
WHITSUNDAYS		F003	S003	H003	N003	E003	O003	Q003
BLUSH		F006	S006	H006	N006	E006	O006	Q006
CROISSANT		F007	S007	H007	N007	E007	O007	Q007
CHANTERELLE		F011	S011	H011	N011	E011	O011	Q011
CHAMPAGNE		F017	S017	H017	N017	E017	O017	Q017
CIDER		F018	S018	H018	N018	E018	O018	Q018
COGNAC		F019	S019	H019	N019	E019	O019	Q019
COHIBA		F021	S021	H021	N021	E021	O021	Q021
BLACK BEAUTY		F022	S022	H022	N022	E022	O022	Q022
HONEY		F025	S025	H025	N025	E025	O025	Q025
GINGERBREAD		F026	S026	H026	N026	E026	O026	Q026
EVISSA	<b>NEW</b>	F033	S033	H033	N033	E033	O033	Q033
LATTE	<b>NEW</b>	F034	S034	H034	N034	E034	O034	Q034
DOLLY	<b>NEW</b>	F035	S035	H035	N035	E035	O035	Q035
GOOSE	<b>NEW</b>	F036	S036	H036	N036	E036	O036	Q036

### **BIG TILES (600 x 900 x 4,5mm)**

SEA SALT		F014	S014	H014	N014	E014	O014	Q014
OYSTER		F015	S015	H015	N015	E015	O015	Q015
VERONA		F023	S023	H023	N023	E023	O023	Q023
TERRAZZO		F024	S024	H024	N024	E024	O024	Q024
CEPPO		F027	S027	H027	N027	E027	O027	Q027
JELLYFISH		F028	S028	H028	N028	E028	O028	Q028
COQUILLE		F029	S029	H029	N029	E029	O029	Q029
PEBBLE BEACH		F030	S030	H030	N030	E030	O030	Q030
ETNA	<b>NEW</b>	F031	S031	H031	N031	E031	O031	Q031
PICCOLO	<b>NEW</b>	F032	S032	H032	N032	E032	O032	Q032

### **PLANKS (1219 x 178 x 4mm)**

CRÉMANT		F050	S050	H050	N050	E050	O050	Q050
COCONUT		F051	S051	H051	N051	E051	O051	Q051
STONEHENGE		F053	S053	H053	N053	E053	O053	Q053
APPLE CRUMBLE		F055	S055	H055	N055	E055	O055	Q055



# THE QUIET STRENGTH OF OUR DREAMTEAM

## Comfort underlay

A soft floor surface, additional acoustic damping and particularly suitable for underfloor heating and cooling. Yes, our Comfort underlay does exactly what its name suggests and needs less than 2 millimetres for that.

The technical characteristics reinforce the power and the capabilities of your Floorify planks. Together they form an inseparable duo.

**U001**  
FLOORIFY COMFORT UNDERLAY  
15m<sup>2</sup> per roll – 2mm thick



# EASY TO MAINTAIN

EASY TO LOVE

## Conny

A quick clean to remove dirt, grease or footprints? Conny maintenance product is your best friend. If you like to clean, then this product is the best of the class.

**M001**  
FLOORIFY CONNY  
1L

## Conny Turbo

Stubborn dirt needs a stubborn approach. Thanks to Conny Turbo maintenance product, you will easily win the fight against the most dirty spots. This product is recommended after you have installed your Floorify floor.

**M002**  
FLOORIFY CONNY TURBO  
1L



# #FLOORIFAN

SPOTTED ON INSTAGRAM

Post your Floorify interior project using **#floorifan** and win a beautiful bouquet of flowers!



F317 @rebelle\_boutique\_drongen



F023 @jolie.logie



F028 @jessdegeest



F029 @fromsoofwithlove



F023 @interiorbysofievasteelant



F014 @pique.interieuradvies



F319 @noemiemeijer



F100 @marliesverschraegen



F023 @anneleen.meurs

Follow and tag us: @floorify\_com





# BUYING FLOORIFY IN YOUR AREA?

MEET OUR EXPERTS!

Whether you're planning to buy a vinyl floor or are still looking for inspiration, our network of stores is never far away. You can easily and quickly **find the best dealers in your area**. Get the best advice from real experts, see and feel the Floorify quality. And better yet: everything is arranged for you down to the very last detail.

You can find a handy overview of all dealers in your area at [floorify.com](https://www.floorify.com)

Meet  
Conny



Find a store on  
[www.floorify.com](https://www.floorify.com)



# TECHNICAL DATA SHEET



PRODUCT DATA	HERRING-BONE				XL PLANKS				LONG PLANKS				BIG TILES			
	ISO24337	125 mm	240 mm	225 mm	600 mm	ISO24337	4,5 mm	4,5 mm	4,5 mm	4,5 mm	ISO24337	4,5 mm	4,5 mm	4,5 mm	4,5 mm	
Width	ISO24337	125 mm	240 mm	225 mm	600 mm	Total thickness	ISO24337	4,5 mm	4,5 mm	4,5 mm	4,5 mm	4,5 mm	4,5 mm	4,5 mm		
Length	ISO24337	750 mm	2000 mm	1524 mm	900 mm	Top layer thickness	EN429	0,55 mm	0,55 mm	0,55 mm	0,55 mm	0,55 mm	0,55 mm	0,55 mm		
Number of panels per pack		24 pc	5 pc	8 pc	4 pc	Core		Sound reducing, robust and waterproof Floorify® Rigid Core								
m <sup>2</sup> per pack		2,25 m <sup>2</sup>	2,40 m <sup>2</sup>	2,74 m <sup>2</sup>	2,16 m <sup>2</sup>	Finish		Protected with stain resistant Floorify® Quiet Sense Technology								
Weight per pack	ISO23997	20,08 kg	20 kg	22 kg	17,6 kg	Locking method		Traditional glueless click under license of Unilin								

## WARRANTY

	Usage class	ISO10582	33
	CE	EN14041	DoP FF001
	Warranty	Residential / Commercial	25 years / 5 years

TECHNICAL DATA	NORM REQUIREMENTS		FLOORIFY® VALUES
Wear resistance	EN13329, Annex E	≥ 2000 cycles	≥ 4000 cycles - AC4
Impact resistance	EN13329	≥ 1600mm	In combination with Floorify® Comfort Underlay: >1800mm - IC3
Residual indentation	ISO24343-1	≤ 0,2 mm	In combination with Floorify® Comfort underlay: no visible changes
Stain resistance	EN423	Groups 1 and 2: grade 5; Group 3: grade 4	Groups 1, 2 and 3: grade 5
UV resistance	ISO 105-B02:1994, Method 3a	≥ 6	> 6
Fire classification	EN 13501-1 ISO 9239-1		Bfl-s1
Dimensional stability	EN ISO23999 6 hours at 80°C	≤ 0,25%	≤ 0,10%
Locking strength	ISO24334	Long side: ≥ 1kN/m Short side: ≥ 1,5kN/m	Long side: > 8kN/m Short side: > 8kN/m (n/a herringbone)
Displacement of furniture feet	EN424	No visible changes	No changes
Castor chairs	EN425	≥ 25000 cycles: No delamination, no disturbance	OK in combination with Floorify® Comfort Underlay
Slip resistance	EN13893 DIN 51130:2014		DS R10
Swelling	ISO24336	≤ 18%	0%
Thermal resistance (floor + underlay)	EN12667	< 0,15R(m <sup>2</sup> K/W)	0,0686R(m <sup>2</sup> K/W) (0,0146 floor + 0,0540 Comfort underlay)
Floor heating		Appropriate for all standard heating systems IN cement flooring. NOT appropriate for or tested with heating films.	
Impact sound improvement	ISO717-2	ΔLw18dB	In combination with Floorify® Comfort Underlay: ΔLin10dB = ΔLw21dB
Formaldehyde emission	EN14041		E1
TVOC 28 days		< 1000µg/m <sup>3</sup>	< 10µg/m <sup>3</sup>
Emissions in the interior air	Decree n°2011-321		A+

REACH Floorify® floors and accessories are fully REACH compliant

Floorify NV reserves the right to make alterations to material and structures when this serves to improve the quality

# TECHNICAL DATA SHEET



PRODUCT DATA	PLANKS		PLANKS		
	ISO24337	178 mm	ISO24337	4 mm	
Width	ISO24337	178 mm	Total thickness	ISO24337	
Length	ISO24337	1219 mm	Top layer thickness	EN429	
Number of panels per pack		12 pc	Core	Sound reducing, robust and waterproof Floorify® Rigid Core	
m <sup>2</sup> per pack		2,60 m <sup>2</sup>	Finish	Protected with stain resistant Floorify® Quiet Sense Technology	
Weight per pack	ISO23997	19,9 kg	Locking method	Traditional glueless click under license of Unilin	

## WARRANTY

	Usage class	ISO10582	32
	CE	EN14041	DoP FF001
	Warranty	Residential use	20 years

TECHNICAL DATA	NORM REQUIREMENTS		FLOORIFY® VALUES
Wear resistance	EN13329, Annex E	≥ 1200 cycles	≥ 1600 cycles - AC3
Impact resistance	EN13329	≥ 1200mm	In combination with Floorify® Comfort Underlay: 1800mm - IC3
Residual indentation	ISO24343-1	≤ 0,2mm	In combination with Floorify® Comfort underlay: no visible changes
Stain resistance	EN423	Groups 1 and 2: grade 5; Group 3: grade 4	Group 1, 2 and 3: grade 5
UV resistance	ISO 105-B02:1994, Method 3a	≥ 6	> 6
Fire classification	EN 13501-1 ISO 9239-1		Bfl-s1
Dimensional stability	EN ISO23999 6 hours at 80°C	≤ 0,25%	≤ 0,10%
Locking strength	ISO24334	Long side: ≥ 1kN/m Short side: ≥ 1,5kN/m	Long side: > 4,5kN/m Short side: > 4,5kN/m
Displacement of furniture feet	EN424	No visible changes	No changes
Castor chairs	EN425	≥ 25000 cycles: No delamination, no disturbance	No visible changes
Slip resistance	EN13893 DIN 51130: 2014		DS R10
Swelling	ISO24336	≤ 18%	0%
Thermal resistance (floor + underlay)	EN12667	< 0,15R(m <sup>2</sup> K/W)	0,0660R(m <sup>2</sup> K/W) (0,012 floor + 0,0540 Comfort underlay)
Floor heating		Appropriate for all standard heating systems IN cement flooring. NOT appropriate for or tested with heating films.	
Impact sound improvement	ISO717-2	ΔLw18dB	In combination with Floorify® Comfort Underlay: ΔLin10dB
Formaldehyde emission	EN14041		E1
TVOC 28 days		< 1000µg/m <sup>3</sup>	< 10µg/m <sup>3</sup>
Emissions in the interior air	Decree n°2011-321		A+

REACH Floorify® floors and accessories are fully REACH compliant

Floorify NV reserves the right to make alterations to material and structures when this serves to improve the quality



---

## Happy to help

Do you want to know (quickly!) how to remove beetroot purée from your new herringbone floor? Or curious why underlay is necessary and how much guarantee you get on Floorify planks? Just like you, we love the best service and so we provide a quick and accurate answer to every question. Floorify is easily accessible, thanks to our online help centre, but also through our numerous dealers and floor experts. Need help or information? Fire Away!

Help centre at  
[www.floorify.com](http://www.floorify.com)



## Floorify warranty

In addition to the legal guarantee, Floorify offers an additional extended warranty for customers who register their products in our warranty database. Registration entitles customers to the following warranty:

**HERRINGBONE, XL PLANKS, LONG PLANKS, BIG TILES | 4,5MM THICKNESS - CL33**  
25 years warranty for residential use, 5 years warranty for commercial use.

**PLANKS | 4MM THICKNESS - CL32**  
20 years warranty for residential use.

This warranty is limited and is restricted to the warranty terms and conditions as found at [www.floorify.com](http://www.floorify.com)



---

Floorify NV, Kruisboommolenstraat 30A, B-8800 Roeselare  
[hello@floorify.com](mailto:hello@floorify.com) - **FLOORIFY.COM**